



BLUE SKY MARKETING
FULL-PALLET RETAIL DISPLAY ISLAND
ASSEMBLY INSTRUCTIONS

ISLAND TIKI-HUT DESIGN



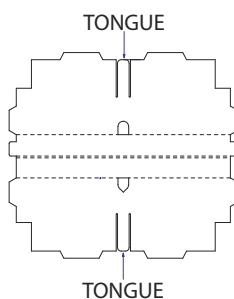
1. Base Tray & Base Assembly

There is one (1) Base Tray and one (1) Base included in this kit. The Base Tray can be left on the pallet or moved to the floor for display assembly. Place the Base in the center of the Base Tray.



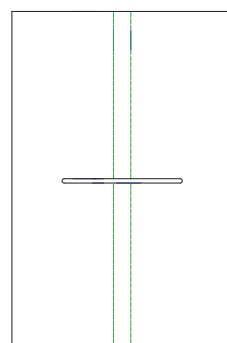
2. Shelf Piece

There are four (4) Shelf pieces included in this kit. Fold each Shelf piece so the top and bottom tongues are on top of each other.



3. Shelf Support Piece

There are four (4) Shelf Support pieces included in this kit. Fold the Shelf Support piece.



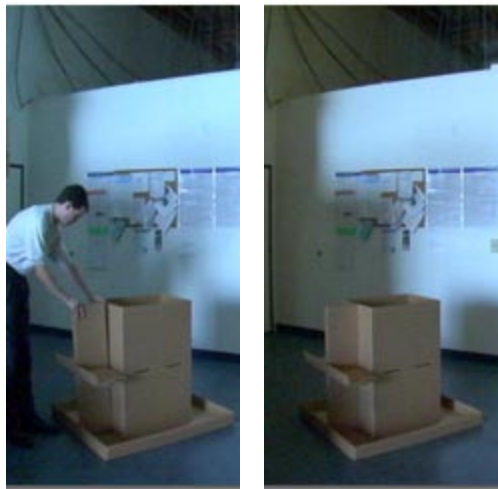
4. Shelf & Shelf Support Assembly

Insert the tongue of the Shelf into the cut-out of the Shelf Support. We will refer to these pieces together as a Shelf Assembly.



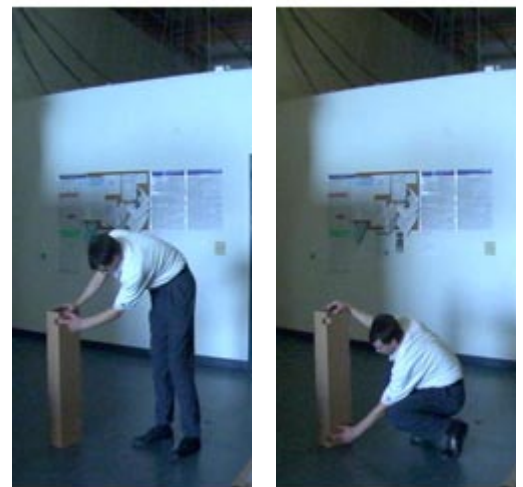
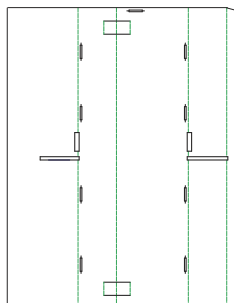
5. Shelf Assembly Installation

Place the first Shelf Assembly into the Base Tray. The two tabs on the back of the Shelf Assembly will slip into the two cut-outs in the Base.



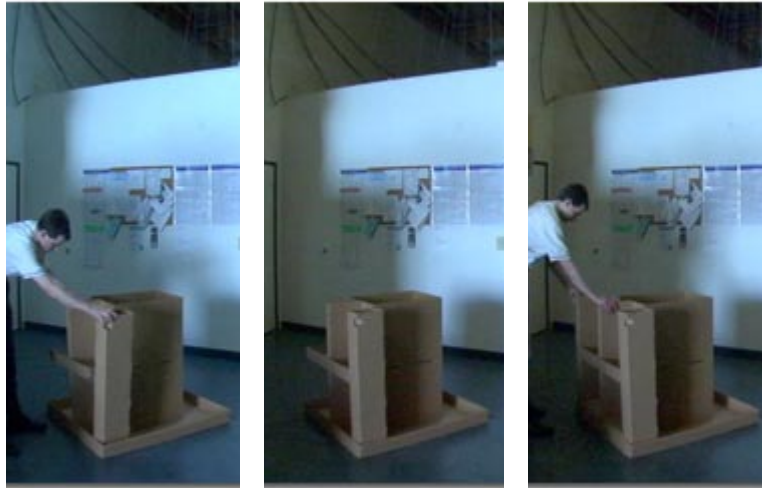
6. Corner Support Piece

There are four (4) Corner Support pieces included in this kit. Unfold the Shelf Support piece into its free-standing rectangular shape. One of the corner edges of the Corner Support piece has a cut-out on each end of its length. With your finger, push each of the two cut-outs in to form Channel Guides. These Channel Guides will be used later to hold the Base Support Poles, installed in steps 13 and 14.



7. Corner Support Installation

Place the first Corner Support piece into a corner of the Base Tray next to the Shelf Assembly. Make sure that the Corner Support's Channel Guide is facing outward. The tabs on each side of the Shelf Assembly will fit into cut-outs in the side of the Corner Support. Once the first Corner Support has been installed, duplicate this process for installing a second Corner Support on the other side of the Shelf Assembly. With the completion of this step, you have now formed a completed Side Unit.



8. Install Side Unit #2

Duplicate Steps 4-7 to install the next Side Unit.



9. Install Side Unit #3

Duplicate Steps 4-6 to install the next Side Unit. Do NOT install the final Corner Support piece in this step.



10. Install Side Unit #4

Duplicate Steps 4-6 to install the final Side Unit.



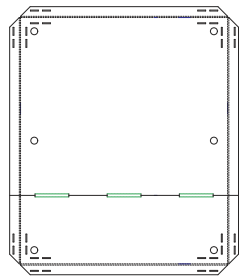
11. Install Final Corner Support

Install the final Corner Support piece.



12. Counter Top

There is one (1) Counter Top piece included in this kit. Unfold the Counter Top piece and place it on top of the completed Base Unit.



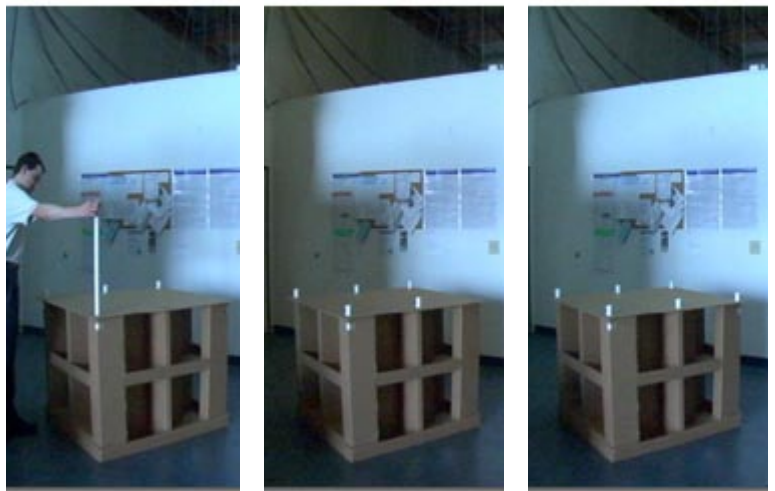
13. Base Support Poles

There are six (6) Base Support Poles included in this kit. A Base Support Pole consists of one (1) 52" Pole and one (1) Extension Connector piece. Begin in any corner. Insert a Base Support Pole into the corner hole in the Counter Top. You should see the Base Support Pole passing through the top Channel Guide of the Corner Support. You may not see the bottom Channel Guide as it may be covered by the Edge of the Base Tray. Insert the next Base Support Pole into a center hole in the Counter Top. This Base Support Pole will also pass through Channel Guides in the Shelf Unit, although the Shelf Unit Channel Guides are not visible. Continue installing the next Base Support Poles.



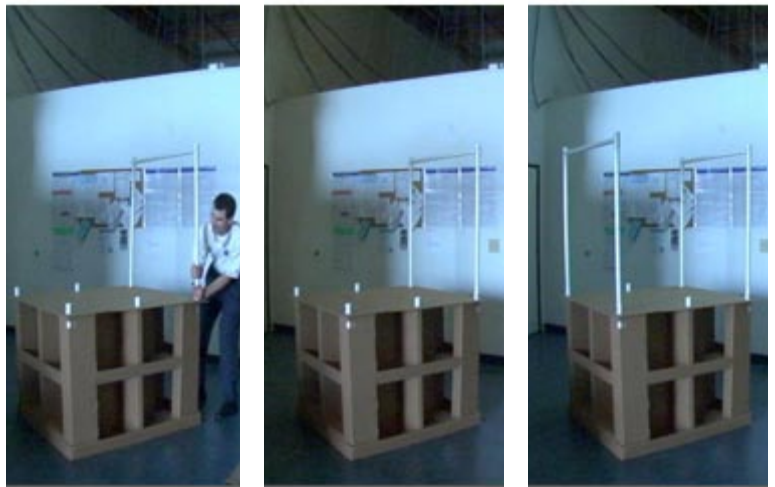
14. Base Support Poles, Cont...

Continue installing the next Base Support Poles, as described in Step 13.



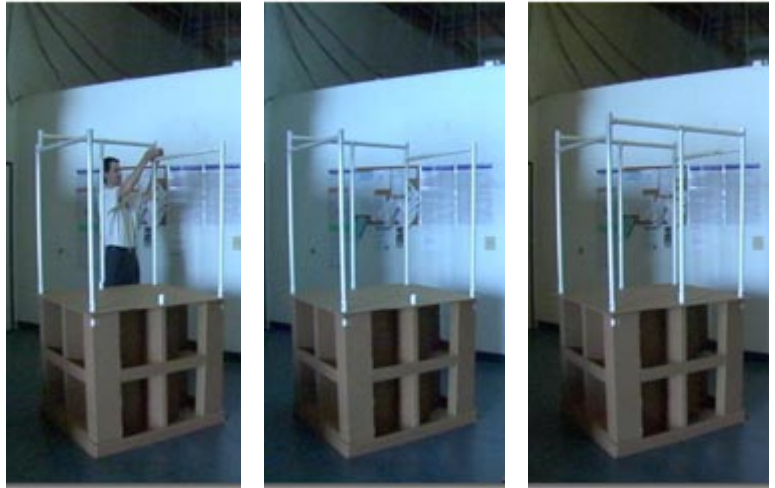
15. Lower Rod Assembly & Install

There are two (2) Lower Rod Assemblies included in this kit. A Lower Rod Assembly consists of two (2) 38" Poles, one (1) 36" Pole, and two (2) T-Connector pieces. The 38" Poles attach to the corner Extension Connectors on the Base Support Poles, installed in Steps 13 and 14. The T-Connectors attach to the tops of the 38" Poles to allow the 36" Pole to connect in-between and allow for an additional connection on top of the T-Connector.



16. Upper Rod Assembly & Install

There are two (2) Upper Rod Assemblies included in this kit. An Upper Rod Assembly consists of two (2) 23" Poles, one (1) 41" Pole, three (3) T-Connector pieces, and two (2) 2" Poles. The 41" Pole attaches to the center Extension Connectors on the Base Support Poles, installed in Steps 13 and 14. A T-Connector is attached to the top of the 41" Pole to allow the 23" Poles to connect to each side. Once the 23" Poles have been attached to the T-Connector, attach a T-Connector to the 23" Pole, using a 2" Pole to interconnect the T-Connector.



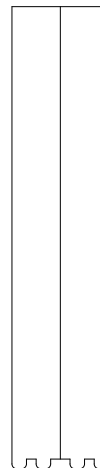
17. Roof Support Assembly & Install

There are two (2) Roof Support Assemblies included in this kit. A Roof Support Assembly consists of two (2) 25.5" Poles, two (2) 2" Poles, two (2) 45 Degree Connector pieces, and one (1) 90 Degree Connector piece. Begin by inserting the 2" Poles into the 45 Degree Connector pieces. Attach the other end of the 2" Poles into the exposed T-Connector from the Upper Rod Assembly, installed in Step 16. Insert the 25.5" Poles into each end of the 90 Degree Connector piece. Connect the open ends of the 25.5" Poles to the open ends of the 45 Degree Connectors.



18. Pole Cover Installation

There are four (4) Pole Cover pieces included in this kit. Fold the Pole Cover piece. Install the Pole Cover by inserting the tabs at the bottom of the Pole Cover into the cut-outs on the outer corner edges of the Counter Top. Continue this process for the next Pole Cover piece.



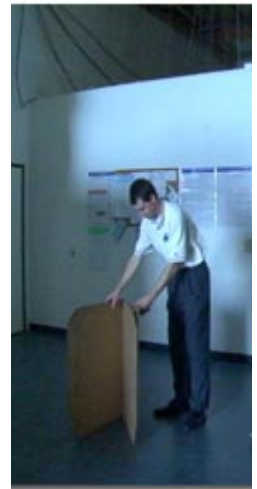
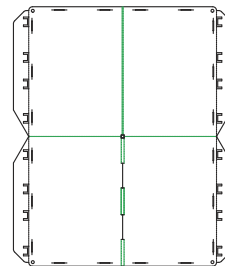
19. Pole Cover Installation, Cont...

Continue installing the next Pole Covers by following the instructions in Step 18.



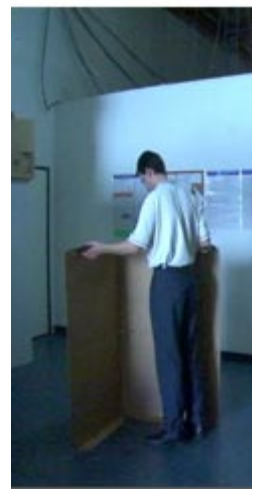
20. Roof Assembly

There is (1) Roof Top piece included in this kit. Unfold the Roof Top piece.



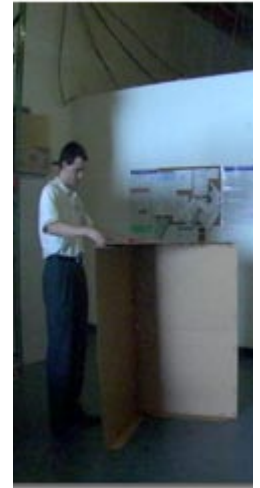
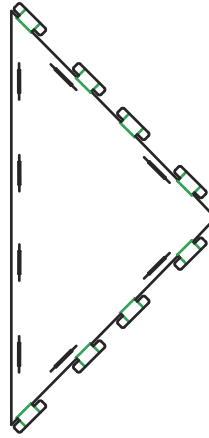
21. Roof Assembly, Cont...

Place the unfolded Roof Top piece on its side edge.



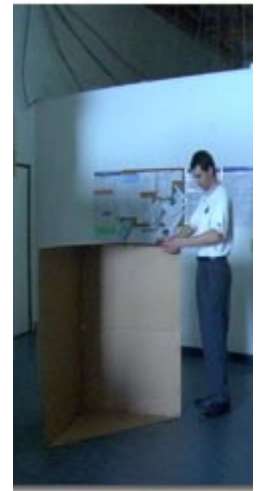
22. Roof Assembly, Cont...

There are two (2) Roof Side pieces included in this kit. Place the triangular Roof Side piece on the side edge of the Roof Top piece and begin to insert the Roof Side tabs into the matching cut-outs on the Roof Top.



23. Roof Assembly, Cont...

Flip the Roof Top onto its other side edge and attach the second Roof Side piece as instructed in Step 22. You have now completed the Roof Assembly.



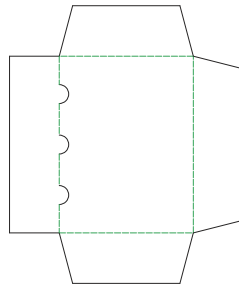
24. Roof Assembly Installation

Place the Roof Assembly over the Roof Support Assembly that you built in Step 17.



25. Shelf Lifters

There are two (2) Shelf Lifters included in this kit. Fold the edges of the Shelf Lifter to form legs and insert the Shelf Lifter into one of the bottom shelf spaces. This will make it easier to display the smaller products.



Congratulations!

Once you have completed Step 25, you have successfully completed the installation of your Tiki-Hut Display Island. For the replacement of missing or damaged parts, or for installation assistance, call XXX-XXXX.